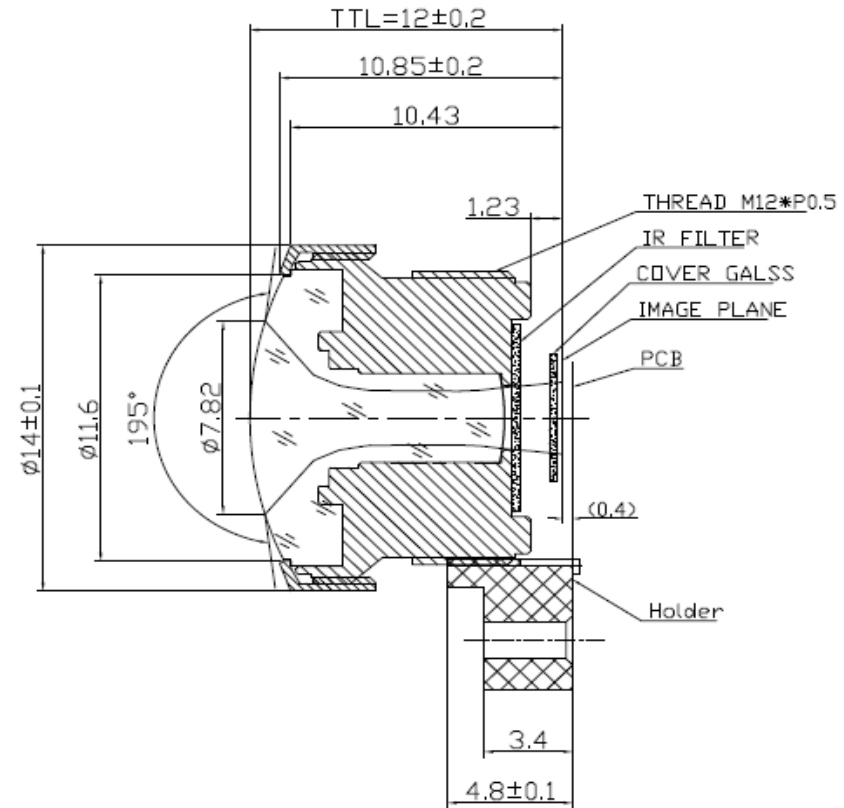


SPECIFICATION

IMAGE FORMAT	Φ2.9mm
FOCAL LENGTH	1.0mm
F.O.V.(sensor OV4689)	205°(D)
	205°(H)
	205°(V)
RESOLUTION	4 Megapixel
OPTICAL DISTORTION	<-117%
APERTURE	F2.2
MOUNT	M12x0.5
IRIS	Fixed
M.O.D.	0.1m
T.T.L.	12.00mm
M. B.F.L.	1.23mm
COMPONENT	6G+IR cut



SCALE	2:1	DRAWN		MODEL	CCL132010MPF	REV	DESCRIPTION	DATE	NAME
DATE		CHECK		 香港致远电子集团有限公司 HONGKONG TOWIN ELECTRONICS CO.,LTD.	①				
UNIT	mm	APPROVE			②				
					③				