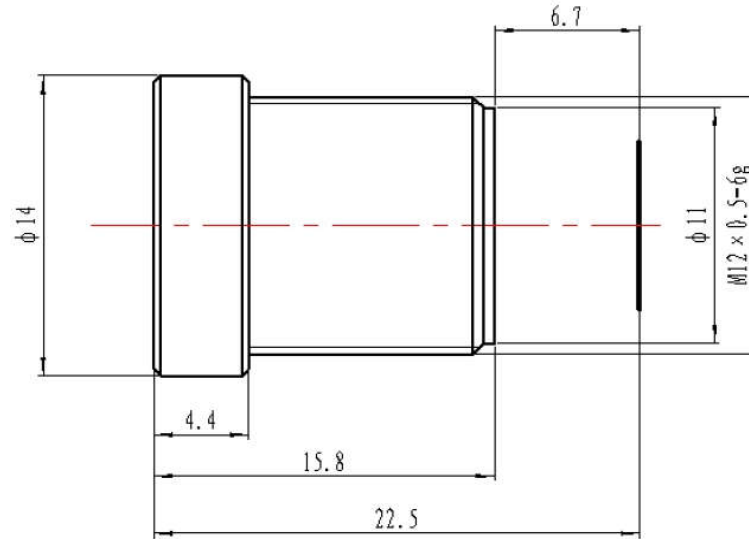


SPECIFICATION

IMAGE FORMAT	1/2.5"
FOCAL LENGTH	16mm
F.O.V.	26°(D)
	25°(H)
	16°(V)
RESOLUTION	5MP
DISTORTION	<-0.3%
APERTURE	F2.0
MOUNT	M12X0.5
IRIS	Fixed
M.O.D.	0.2m
T.T.L.	22.5mm
B.F.L.	7.1mm
DIMENSION	Φ14x15.8mm
IR	Corrected



SCALE		DRAWN		MODEL	CCL12516MPR2	REV	DESCRIPTION	DATE	NAME
DATE		CHECK		 香港致远电子集团有限公司 HONGKONG TOWIN ELECTRONICS CO.,LTD.	①				
UNIT	mm	APPROVE			②				
					③				